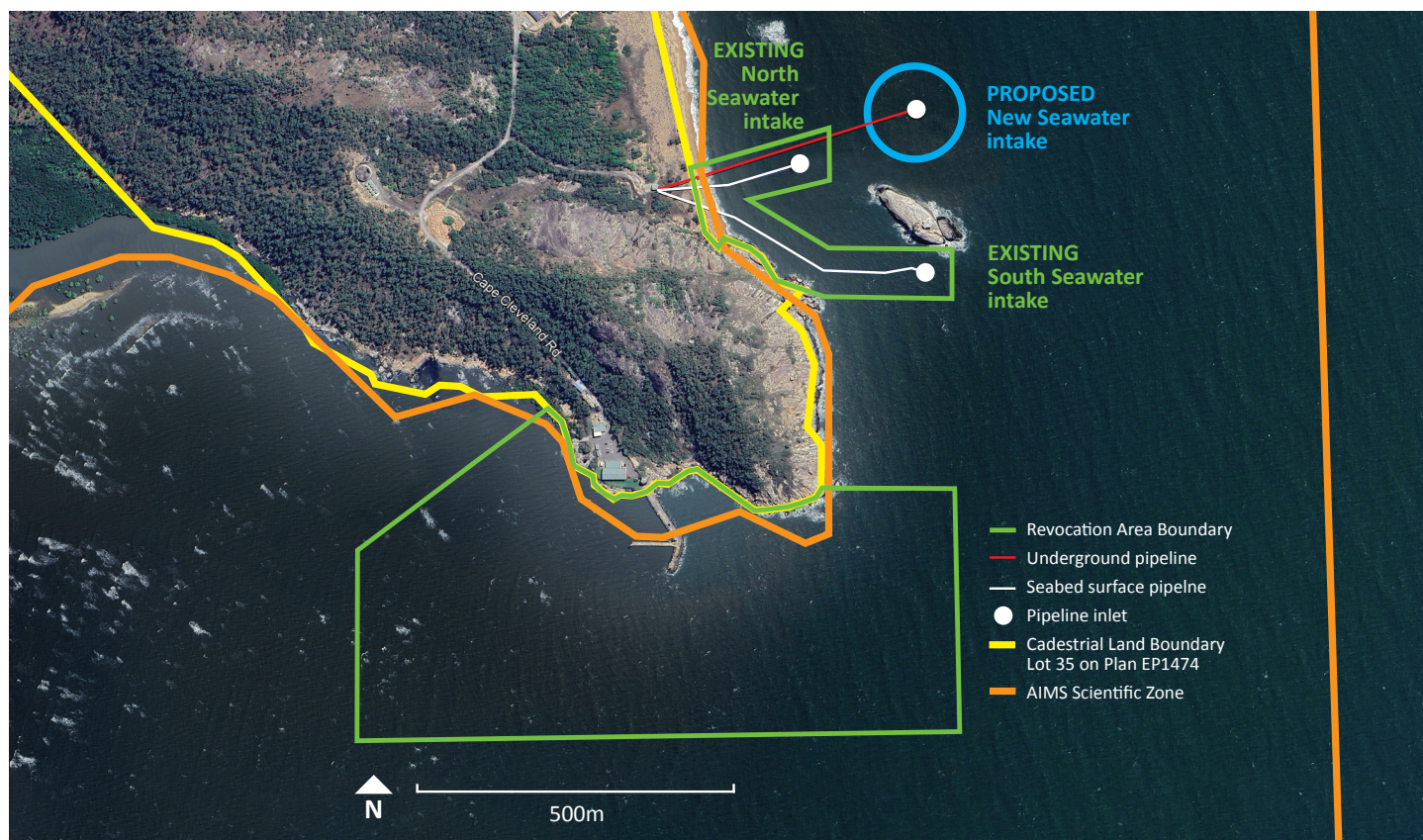


Bowling Green Bay Fish Habitat Area

Proposed Partial Revocation



Proposed Revocation Area	Proposed Boundary Description	Approximate Area (Ha)	% of FHA-007	Remaining FHA Area (Ha)
1	The area bounded by a line commencing at the intersection of the tip of Cape Ferguson - the South East Boundary of Lot 35 on Plan EP1474 (at or about -19.276777°S, 147.061357°E) then running progressively: 1. East to its intersection with -19.276777°S, 147.063463°E. 2. South to its intersection with -19.280240°S, 147.063463°E. 3. West to its intersection with -19.280240°S, 147.054359°E 4. North to its intersection with -19.277556°S, 147.054359°E. 5. North East to its intersection with the boundary of Lot 35 on Plan EP1474 (at or about -19.275548°S, 147.057253°E). 6. Along the Boundary of Lot 35 on Plan EP 1474 to the point of commencement.	38.8	0.057%	68534.2
2	The area bounded by a 75M radius circle with centre point at -19.271119°S, 147.062839°E.	1.8	0.003%	68532.4
3	The area bounded by a line commencing on the East Boundary of Lot 35 on Plan EP1474 (at or about -19.272059°S, 147.059413°E) then running progressively: 1. East North East to its intersection with -19.271483°S, 147.061518°E. 2. South to its intersection with - 19.272223°S, 147.061518°E. 3. West South West to its intersection with - 19.272503°S, 147.060270°E. 4. South East to its intersection with -19.273224°S, 147.061518°E 5. East to its intersection with -19.273224°S, 147.063352°E. 6. South to its intersection with -19.273948°S, 147.063352°E. 7. West to its intersection with -19.273948°S, 147.061518°E. 8. North East to its intersection with the boundary of Lot 35 on Plan EP1474 (at or about -19.273830°S, 147.061128°E. 9. Along the Boundary of Lot 35 on Plan EP1474 to the point of commencement.	4.8	0.007%	68527.6
TOTAL		45.4	0.066%	68527.6