

AIMS Data Repository Workflow Documentation

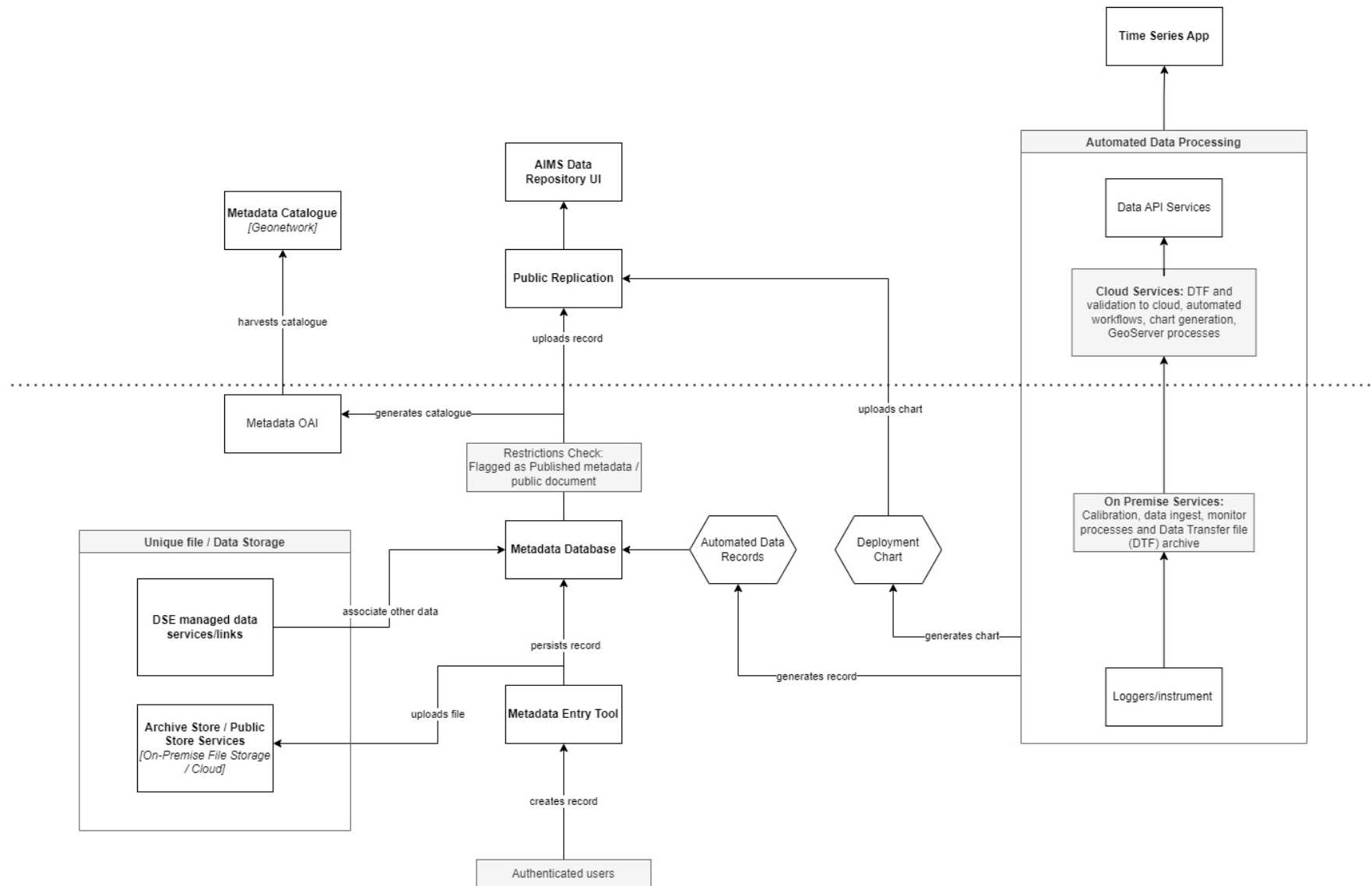
Introduction

The workflow documentation outlines the repository's infrastructure and approach to handling of documents and data.

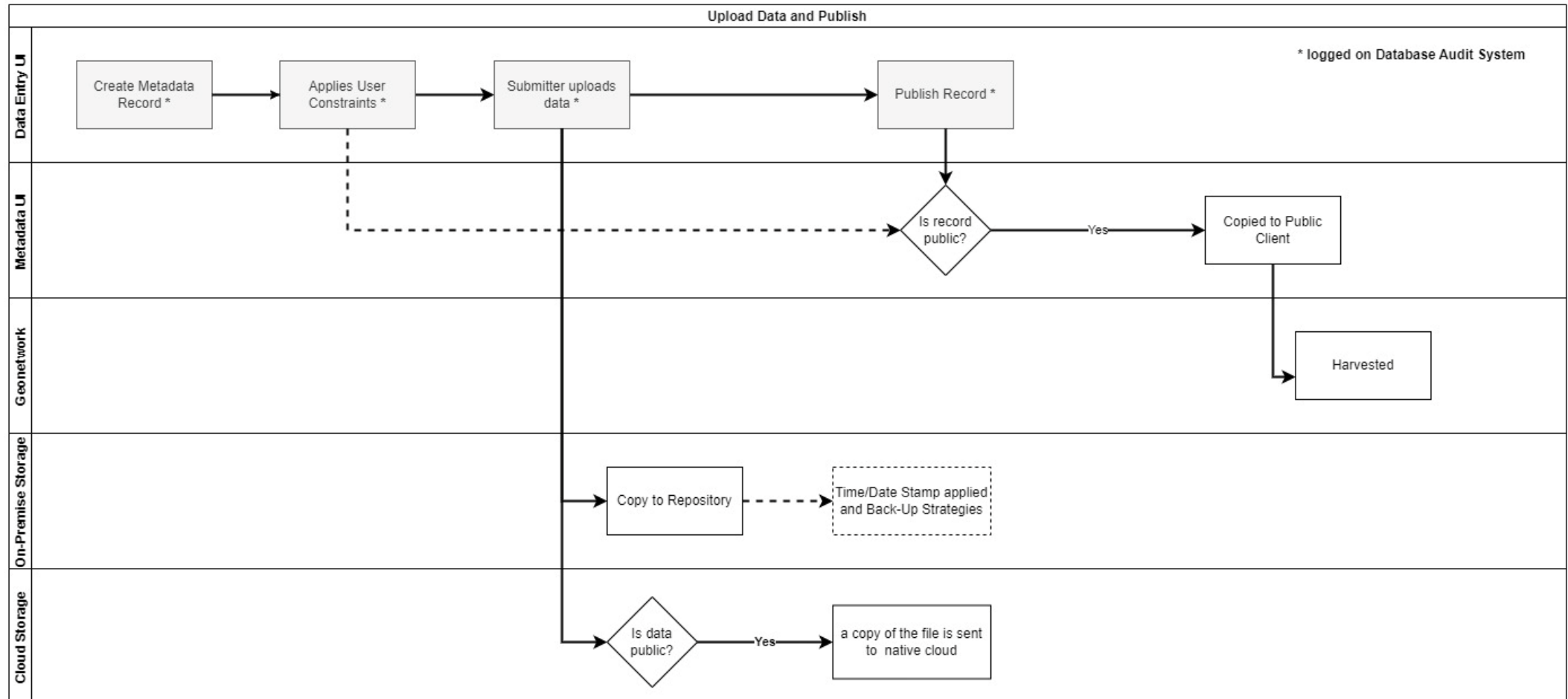
The following workflows are presented:

0. General Repository Infrastructure Overview
1. Standard Upload Data and Publish Workflow
2. Manual Upload Data and Publish Workflow
3. Submission Package (word doc and data files) to Repository Email Workflow

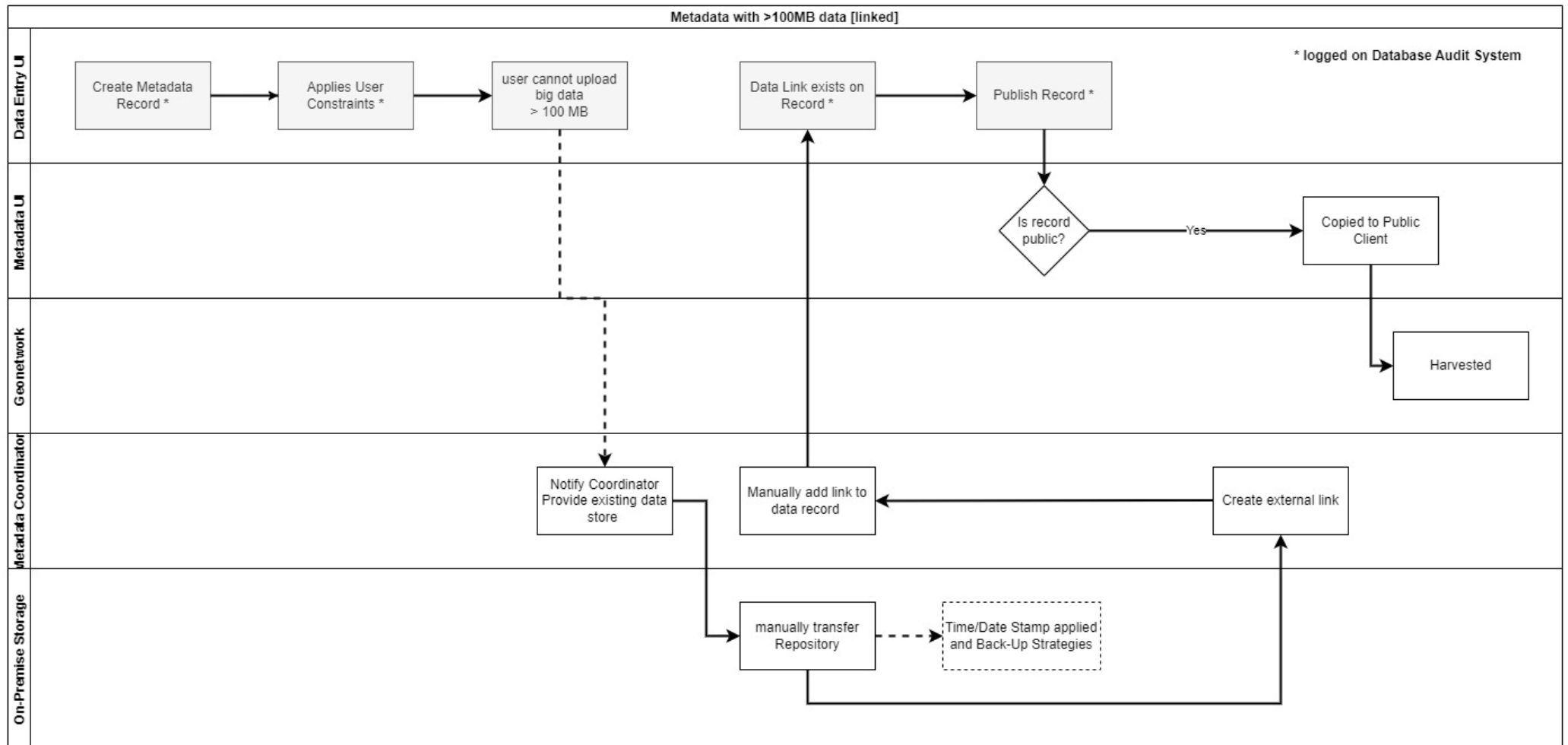
0. General Repository Infrastructure Overview



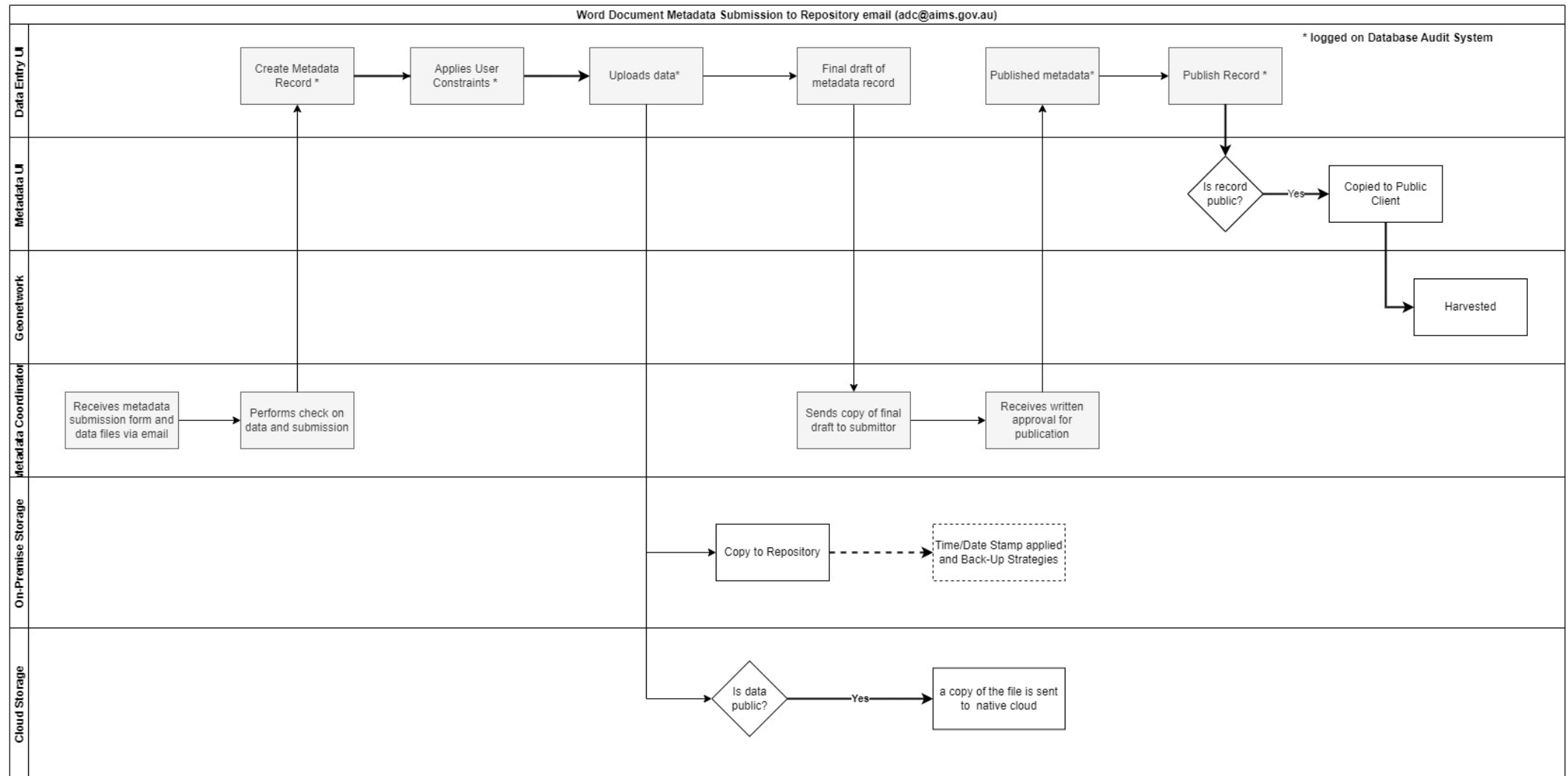
1. Standard Upload Data and Publish Workflow



2. Manual Upload Data and Publish Workflow



3. Submission Package (word doc and data files) to Repository Email Workflow



Note: where check on data and submission does not meet standards, submitters will be asked to resubmit the metadata package with amendments.